



INSTRUCTION BULLETIN

No. 3568

Machine: 800/810

Published: 07-2004

Rev. 01

NOTE: DO NOT DISCARD Parts List from Instruction Bulletin. Place Parts List in the appropriate place in the machine manual for future reference. Retaining the Parts List will make it easier to reorder individual parts and will save the cost of ordering an entire kit.

NOTE: Numbers in parenthesis () are reference numbers for parts listed in Bill of Materials.

Installation Instructions for Side Brush Mirror Kit 76898.

SYNOPSIS / PROBLEM:

This kit contains parts needed to install a mirror on the 800 and 810 model sweepers. Please follow step-by-step instructions.

SPECIAL TOOLS / CONSIDERATIONS: NONE

(Estimated time to complete: 2 hours)

PREPARATION:

FOR SAFETY: Before leaving or servicing machine, stop on level surface, set parking brake (if equipped on machine), turn off machine, and remove key.

1. Disconnect battery cables from machine.



WARNING: Always disconnect battery cables from machine before working on electrical components.

2. Drill two 5/32" holes in lower right side of cab or overhead guard. Refer to FIG. 1 for locations.

NOTE: Drill two holes on inside of cab or overhead guard leg.

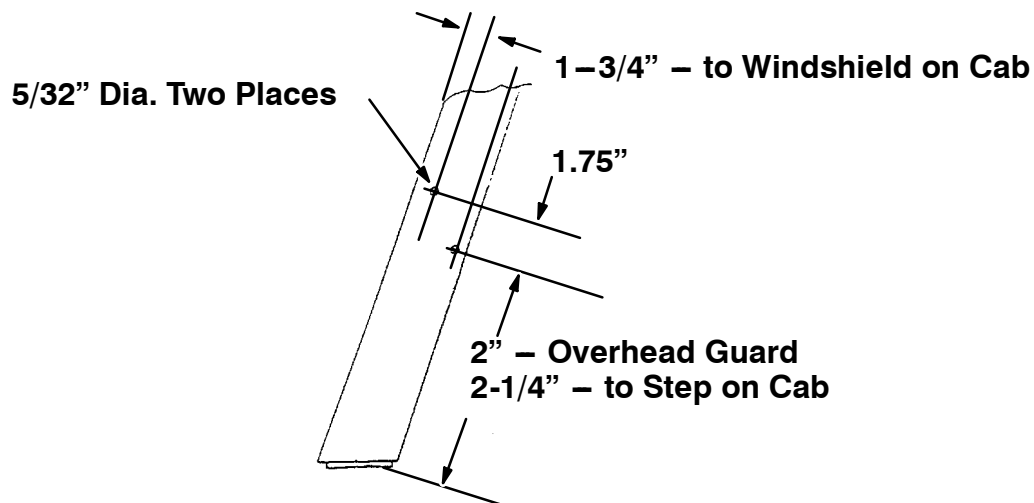


FIG. 1 – Hole Locations in Lower Right Guard Leg

3. Drill three 9/32" holes in upper right front of cab or overhead guard. Refer to FIG. 2 for locations.

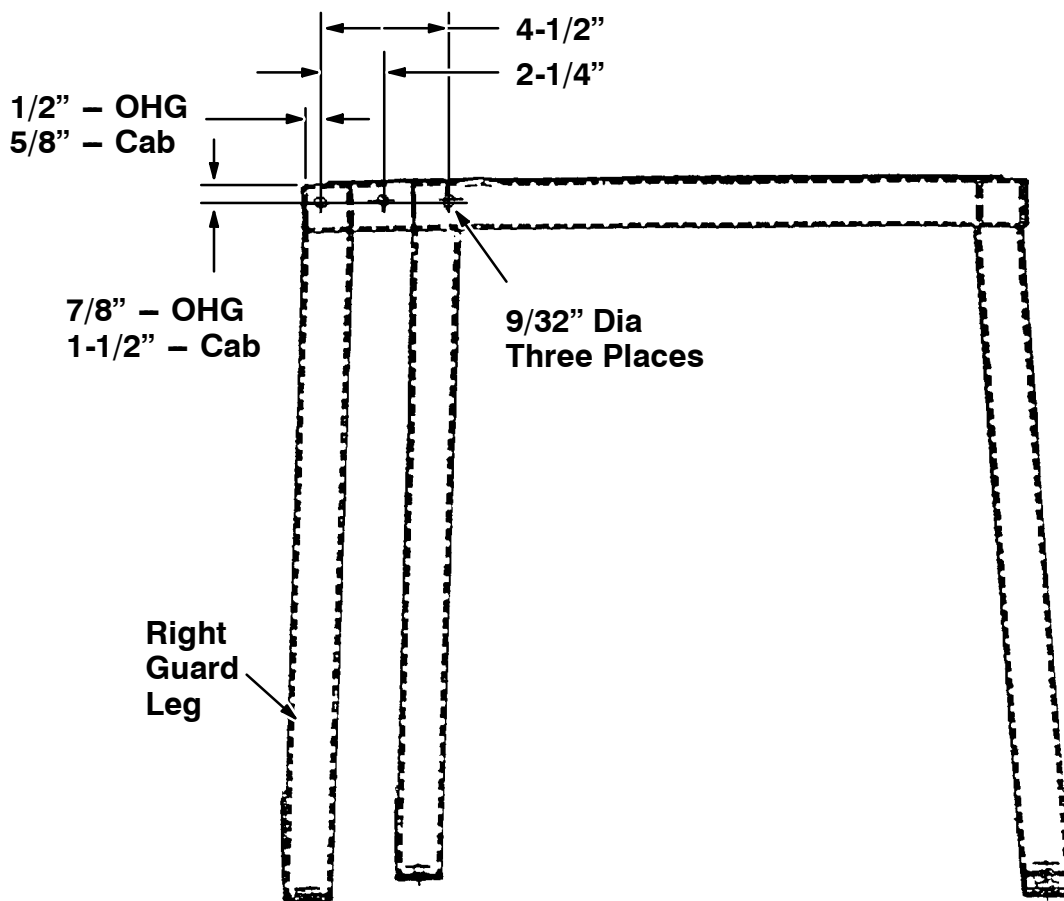


FIG. 2 – Hole Locations in Cab and Overhead Guard Frame

INSTALLATION:

1. Install mounting bracket (3) onto cab or overhead guard with three hex screws (9) and three flat washers (10). Refer to FIG. 3 and FIG. 4.

NOTE: FOR OVERHEAD GUARD: Install bracket in lower three holes. **FOR CAB:** Install bracket in top three holes. Refer to Fig. 1 and Fig. 2.

2. Install one end of gas spring (11) onto mounting bracket (3) with one hex screw (12), one flat washer (7), and one hex nut (13). Refer to FIG. 3 and FIG. 4.
3. Install mirror guard (2) onto mounting bracket (3) with steel tube (5), two flange bushings (4), hex screw (6), one flat washer (7), and hex flange nut (8). Refer to FIG. 3 and FIG. 4.
4. Install remaining end of gas spring (11) onto mounting bracket (3) with one hex screw (12), one flat washer (7), and one hex nut (13). Refer to FIG. 3 and FIG. 4.
5. Install round mirror (1) onto mirror guard (2) with hardware included with mirror. Refer to FIG. 3 and FIG. 4.
6. Install side brush mirror (15) onto inside lower corner of cab or overhead guard with bracket (16), screws (17) and hardware (18), (19), and (20). Refer to FIG. 3 and FIG. 4.
7. Focus mirrors so sidebrush area is visible to operator and tighten mirror hardware. Refer to FIG. 5 and FIG. 6 for mirror viewing angles.

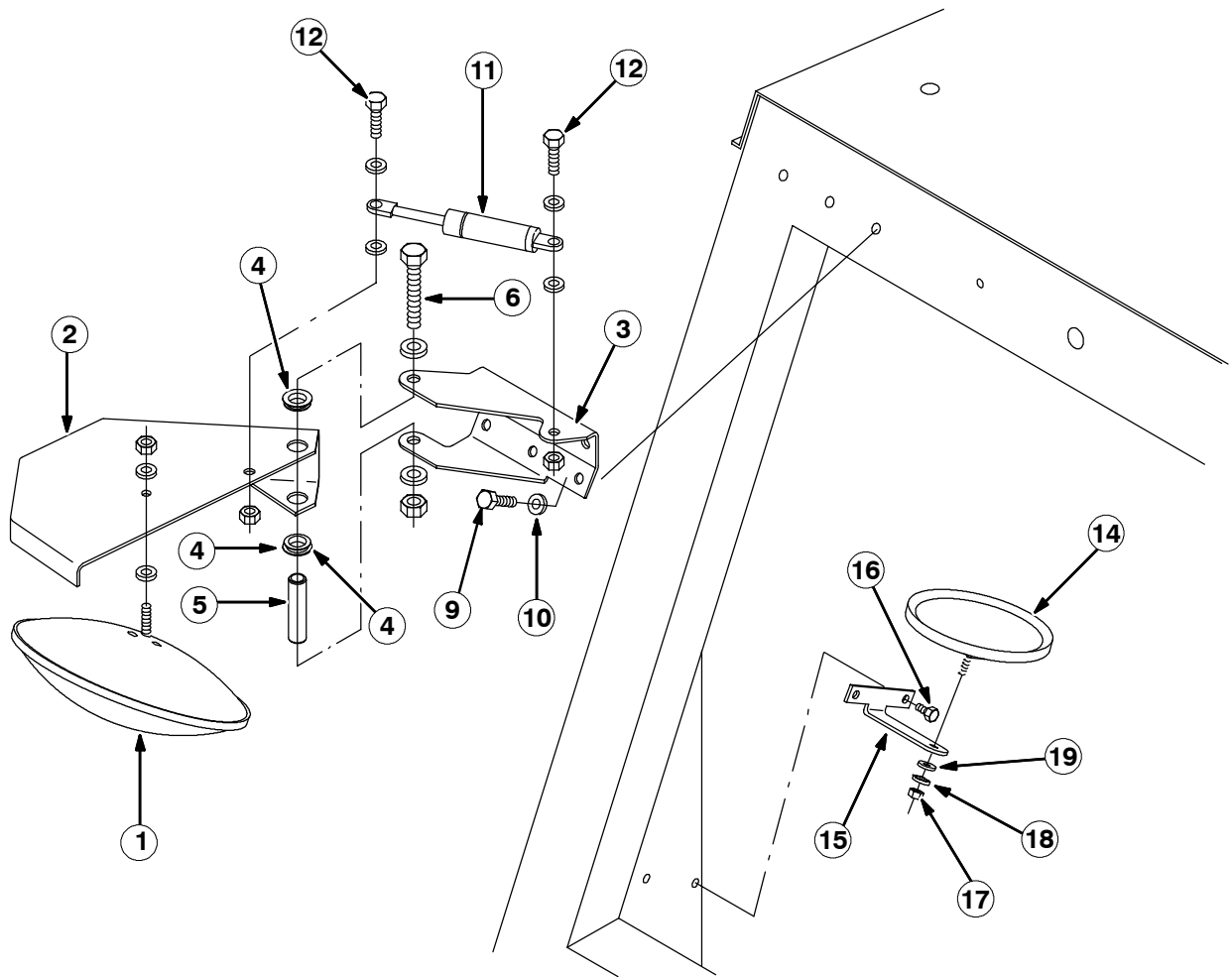


FIG. 3 – Mirror Kit Installation

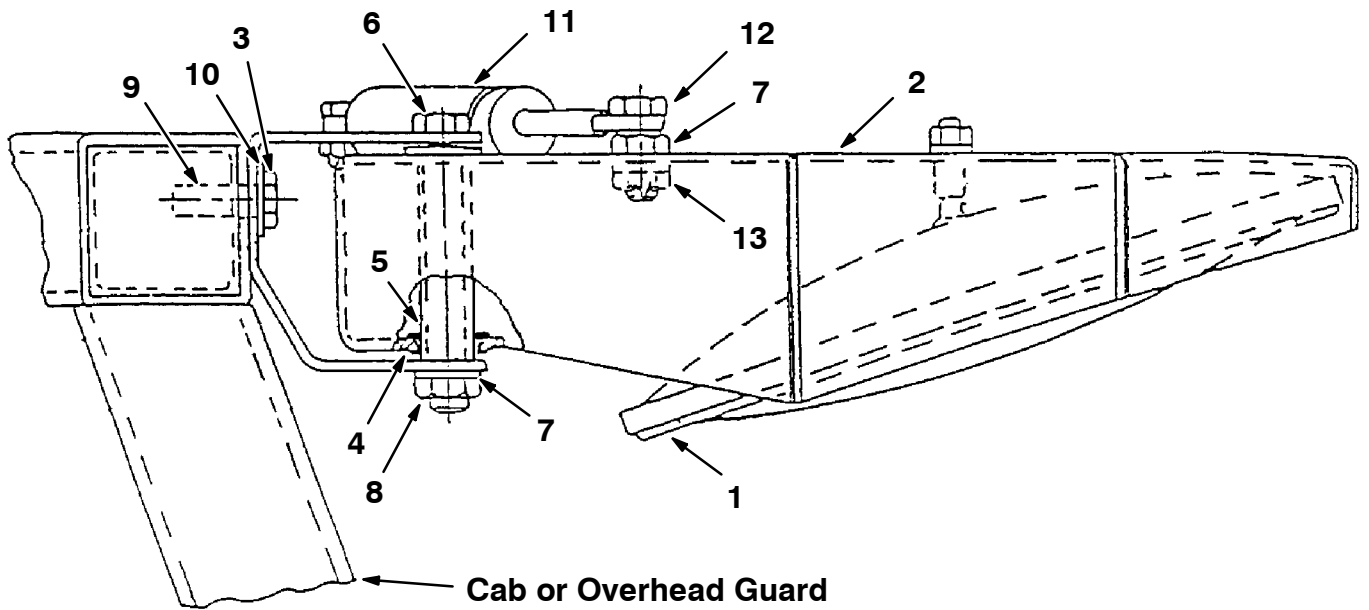


FIG. 4 – Mirror and Mounting Bracket Assembly

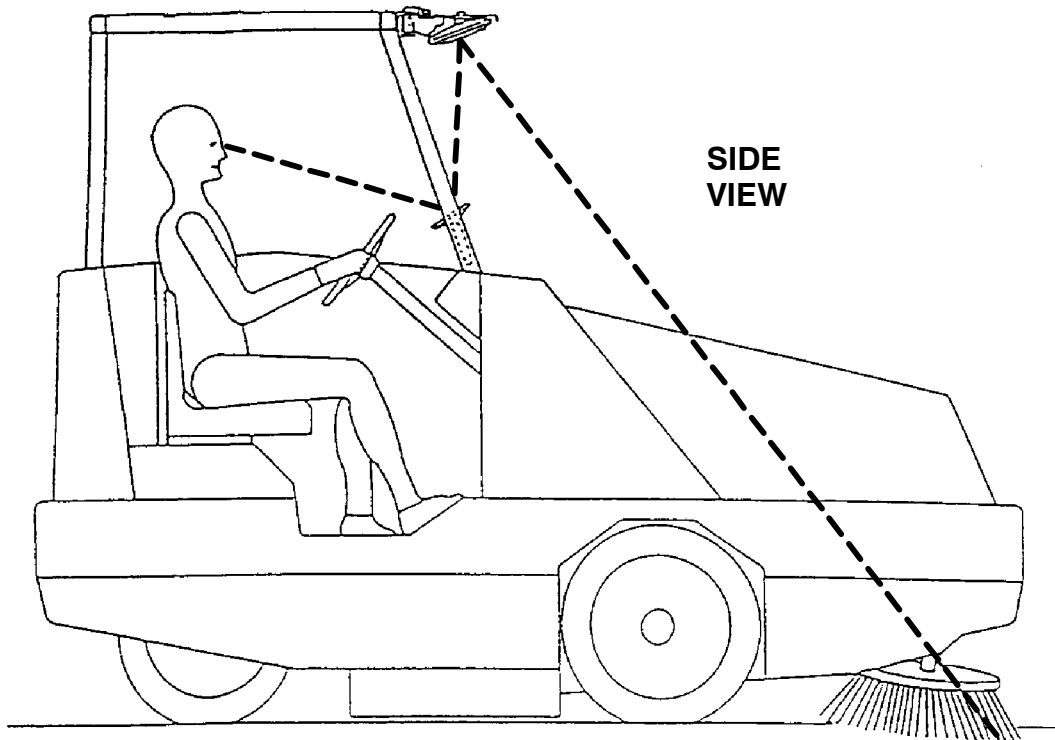


FIG. 5 – Side Brush Mirror View Angle (Side View)

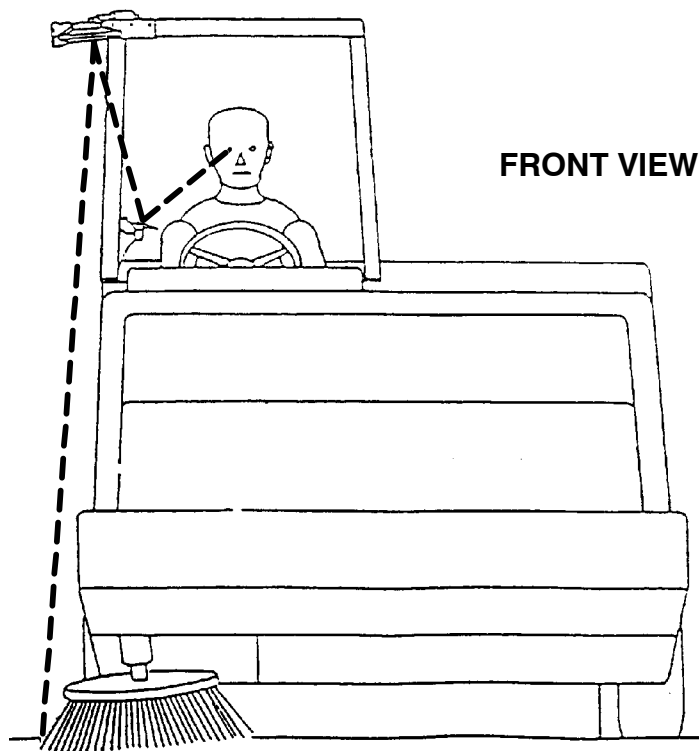


FIG. 6 – Side Brush Mirror View Angle (Front View)

Bill of Materials for Kit, CI, Mirror, Brush, Side , Cab [800L] 76898

Ref.	TENNANT Part No.	Description	Qty.
1	68445	Mirror, Convex, 8.0D	1
2	75881	Guard, Mirror	1
3	75880	Bracket, Mtg, Mirror	1
4	41434	Bushing, FIng, 0.62B 0.68D 0.00L, Nyl	2
5	70761	Tube, 00.62D 00.44B 02.4L, Stl	1
6	03193	Screw, Hex, M10 x 1.5 x 90, 8.8	1
7	32492	Washer, Flat, 0.38 Std	3
8	07792	Nut, Hex, FIng, M10 x 1.5	1
9	16958	Screw, Hex, .31 – 18 x 0.50, FMG	3
10	32491	Washer, Flat, 0.31 Std	3
11	12549	Gas Spring, 80 lb, 2.0Strk	1
12	21195	Screw, Hex, .38 – 16 x 0.75, 5	2
13	50902	Nut, Hex Lock, 0.38 – 16, NI	2
14	369787	Mirror, Flat, 5.1D	1
15	49032	Bracket, Mtg, Mirror, Rearview	1
16	74455	Screw, Hex, M6 x 1.0 x 12 FMG	2
17	01691	Nut, 5/16 SS	1
18	43952	Washer, 5/16 SS, Loc1	1
19	01685	Washer, Flat, SS, 5/16	1

TENNANT COMPANY
P. O. Box 1452
Minneapolis, MN 55440-1452